



**Parks and Public Works Committee Regular Meeting
March 26, 2024 – 10:00 am**

*This is an in-person meeting at Saugatuck City Hall, 102 Butler St, Saugatuck, MI 49453.
The meeting will also be available live, virtually on Zoom.*

1. CALL TO ORDER

2. ROLL CALL

3. APPROVAL OF AGENDA

4. APPROVAL OF MINUTES:

5. PUBLIC COMMENTS/TODAY'S AGENDA TOPICS ONLY (LIMIT 3 MINUTES) *Use the "raise hand" button in the participant's screen found in the Zoom interface or enter *9 if calling in by phone to raise hand.*

6. REVIEW/DISCUSSION:

- A. Pallet Sign Design and Traffic Signal at Lake Street/Blue Star Highway for Blue Star Multimodal Path *(Pg. 2)*
- B. Mt. Baldhead Bathroom Replacement *(Pg. 7)*
- C. Study Group Updates.
 - 1. Invasive Species.
 - 2. Airport Property.
 - 3. Blue Star Multimodal Path (Lake Street).
 - 4. Village Square & Playground.
 - 5. Park Street, Mt. Baldhead Improvements, & AT&T status.

7. REVIEW NEXT STEPS

8. PUBLIC COMMENTS (LIMIT 3 MINUTES) *Use the "raise hand" button in the participant's screen found in the Zoom interface or enter *9 if calling in by phone to raise hand.*

9. MEMBER CLOSING COMMENTS

10. ADJOURN

NOTICE:

Join online by visiting:
<https://us02web.zoom.us/j/2698572603>

Join by phone by dialing:
**(312) 626-6799 -or-
(646) 518-9805**

Then enter "Meeting ID":
2698572603

Please send questions or comments regarding meeting agenda items prior to meeting to:
rcummins@saugatuckcity.com

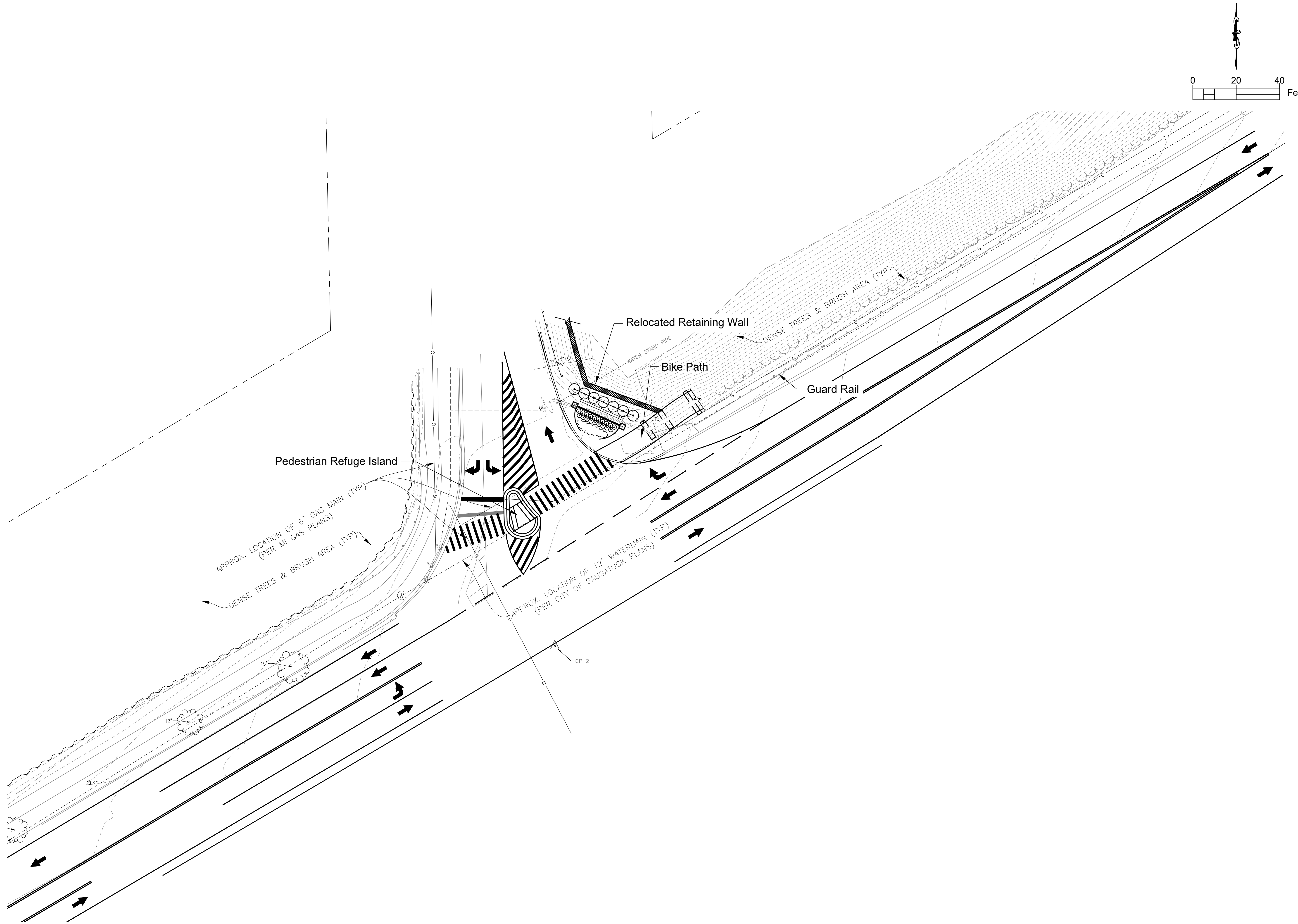
Requests for accommodations or interpretive services must be made 48 hours prior to this meeting. Please contact Saugatuck City Clerk at 269-857-2603 or Wolters@saugatuckcity.com for further information.

THE BAR BELOW SHOWS
PRIMARY COLORS

THE BAR BELOW SHOWS
GRAYSCALE FROM WHITE TO SOLID
BLACK

WE RECYCLE

3/22/2024 1:00 PM
O:\1\2023\230038_Saugatuck\4C_BlueStar_T1\Drawings\DS_230038_Saugatuck_BlueStar_Trail\Sheet\230038_Land_Alt_3.dwg - GENERAL LAYOUT
ADAMS, MARK
DESIGNED BY: -
CHECKED BY: -
APPROVED BY: -



(866) 454-3923 | WWW.C2AE.COM

INTERSECTION GENERAL PLAN

SAUGATUCK PALETTE SIGN
ALLEGAN COUNTY, MI

PHASE

SCHEMATIC DESIGN

ISSUANCES

| # | DESCRIPTION | DATE |
|---|------------------|-----------|
| 0 | SCHEMATIC DESIGN | 18JAN2024 |

PROJ. #: 230038

COPYRIGHT © C2AE
NOT TO BE REPRODUCED OR DISTRIBUTED
WITHOUT PRIOR WRITTEN CONSENT
ALL RIGHTS RESERVED

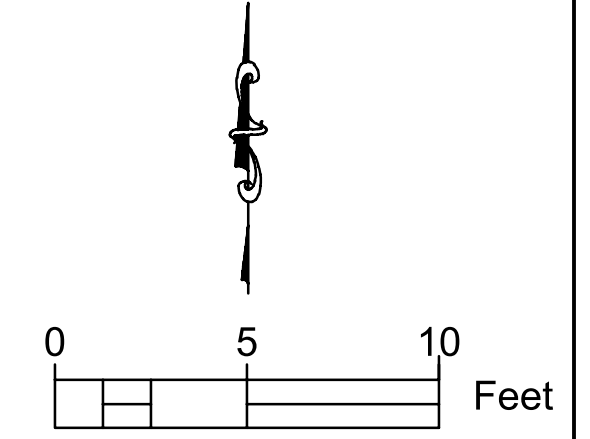
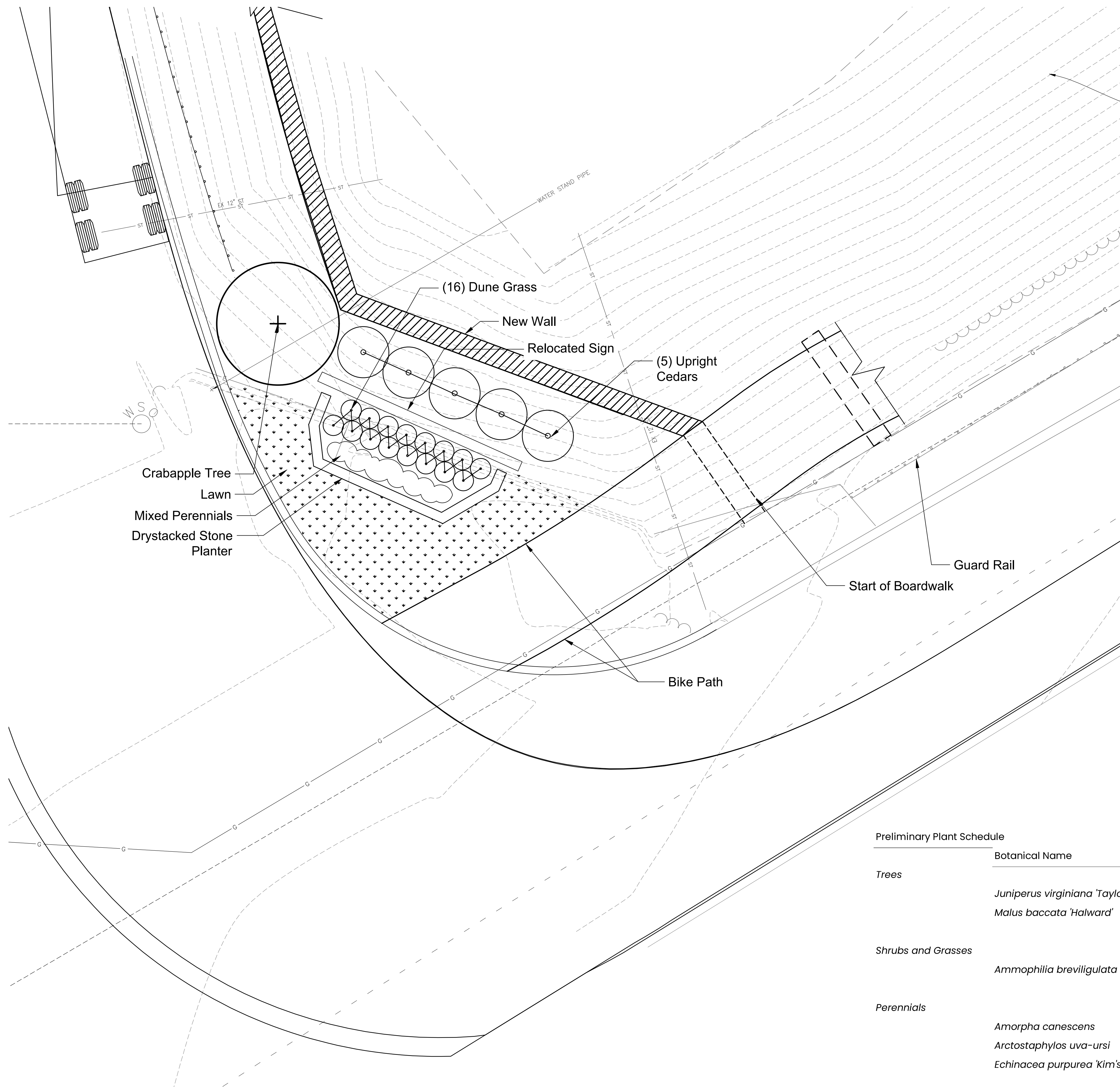


THE BAR BELOW SHOWS
PRIMARY COLORS

THE BAR BELOW SHOWS
GRAYSCALE FROM WHITE TO SOLID
BLACK

WE RECYCLE

3/20/2024 12:15 PM
O:\2023\230038_Saugatuck\BlueStar_T1\Drawings\DS_230038_Saugatuck_BlueStar_T1\Sheets\230038_Land_Alt_Final_240318.dwg - CONCEPT LAND
DESIGNED BY: SPENCER_JESS
CHECKED BY: -
APPROVED BY: -



(866) 454-3923 | WWW.C2AE.COM

LANDSCAPE PLAN

SAUGATUCK PALETTE SIGN
ALLEGAN COUNTY, MI

PHASE

SCHEMATIC DESIGN

ISSUANCES

| # | DESCRIPTION | DATE |
|---|------------------|-----------|
| 0 | SCHEMATIC DESIGN | 18JAN2024 |
| 1 | FINAL SCHEMATIC | 19MAR2024 |

Preliminary Plant Schedule

| | Botanical Name | Common Name |
|--------------------|---|--------------------------|
| Trees | <i>Juniperus virginiana 'Taylor'</i> | Taylor Eastern Red Cedar |
| | <i>Malus baccata 'Halward'</i> | Siberian Crabapple |
| Shrubs and Grasses | <i>Ammophila breviligulata</i> | Dune Grass |
| Perennials | <i>Amorpha canescens</i> | Lead Plant |
| | <i>Arctostaphylos uva-ursi</i> | Kinnickinnick |
| | <i>Echinacea purpurea 'Kim's Knee High'</i> | Dwarf Purple Coneflower |

PROJ. #: 230038
COPYRIGHT © C2AE
NOT TO BE REPRODUCED OR DISTRIBUTED
WITHOUT PRIOR WRITTEN CONSENT
ALL RIGHTS RESERVED



LANDSCAPE PLAN
 SAUGATUCK PALETTE SIGN
 ALLEGAN COUNTY, MI

PHASE

SCHEMATIC DESIGN

ISSUANCES

| # | DESCRIPTION | DATE |
|---|------------------|-----------|
| 0 | SCHEMATIC DESIGN | 04MAR2024 |
| | FINAL SCHEMATIC | 19MAR2024 |

PROJ. #: 230439

COPYRIGHT© C2AE
 NOT TO BE REPRODUCED OR DISTRIBUTED
 WITHOUT PRIOR WRITTEN CONSENT
 ALL RIGHTS RESERVED





SAUGATUCK
Future Banner Placement

LANDSCAPE PLAN

SAUGATUCK PALETTE SIGN
ALLEGAN COUNTY, MI

PHASE
SCHEMATIC DESIGN

ISSUANCES

| # | DESCRIPTION | DATE |
|---|------------------|-----------|
| 0 | SCHEMATIC DESIGN | 04MAR2024 |
| | FINAL SCHEMATIC | 19MAR2024 |

PROJ. #:
COPYRIGHT © C2AE
NOT TO BE REPRODUCED OR DISTRIBUTED
WITHOUT PRIOR WRITTEN CONSENT
ALL RIGHTS RESERVED



Previously Developed Traffic Signal Rendering



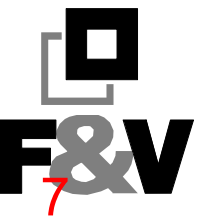


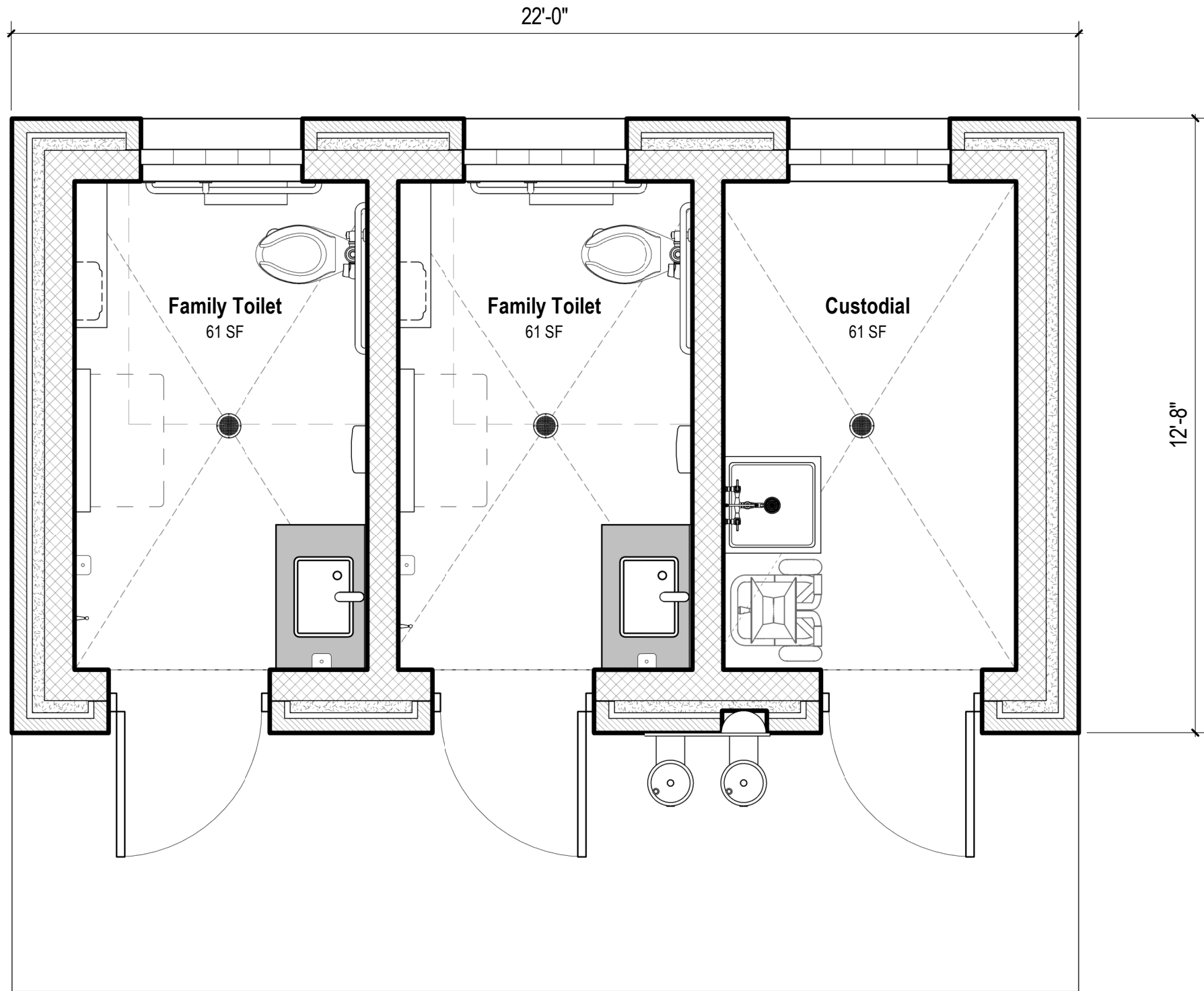
ISSUED FOR:

City of Saugatuck
Mount Baldhead Park
Restroom Building Replacement

Sketch - A1

PROJECT NO: 860460
ISSUE DATE: 12.20.2023





PRELIMINARY FLOOR PLAN

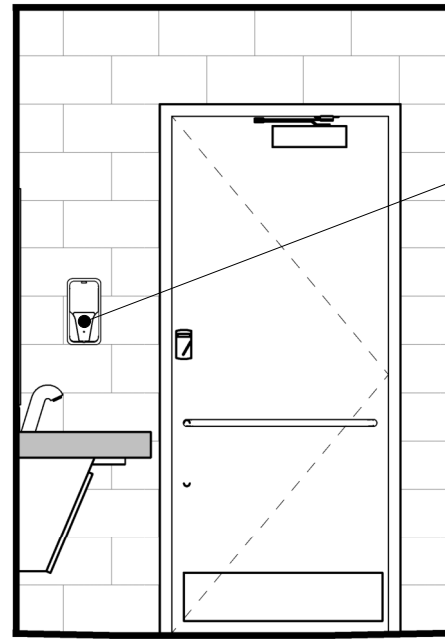
ISSUED FOR:

City of Saugatuck
Mount Baldhead Park
Restroom Building Replacement

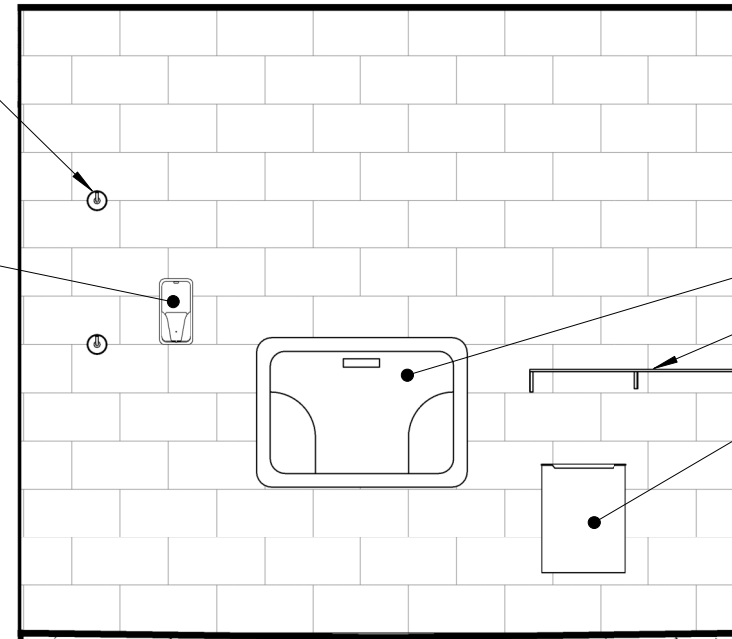
Sketch - A2

PROJECT NO.: 860460
ISSUE DATE: 12.20.2023



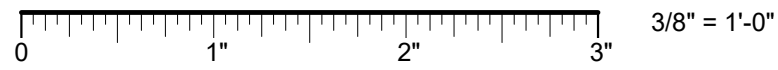


- Clothes hooks
(72" AFF & 48" AFF)
- Electronic soap dispenser
(battery)
- Electronic sanitizer
dispenser (battery)

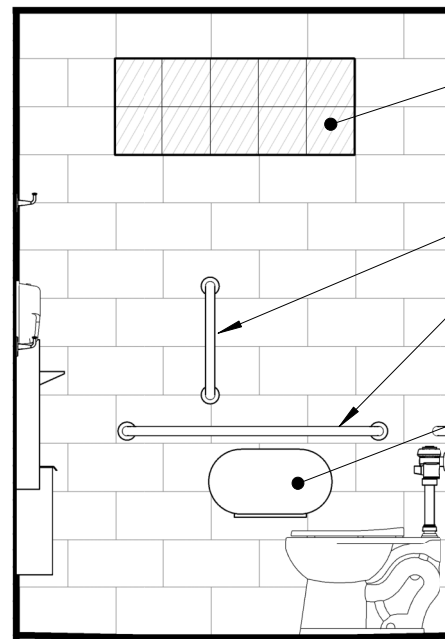
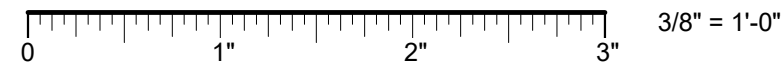


- Baby changing table
- Stainless steel shelf (36"x8")
- Stainless steel waste disposal
with hinged lid

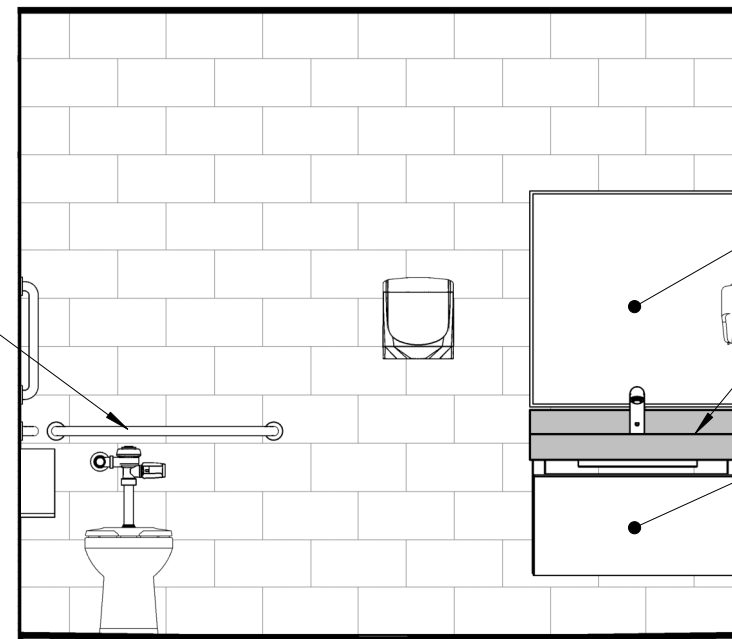
FRONT WALL ELEVATION



ACCESSORY WALL ELEVATION

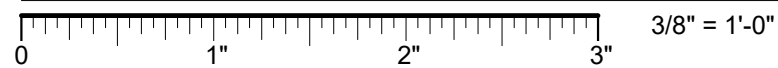


- Glass block (40"x16")
- Grab bar (18", vertical)
- Grab bar (42")
- Grab bar (36")
- Toilet tissue dispenser

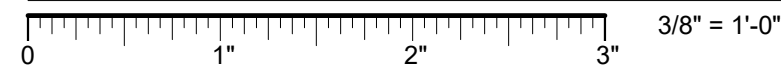


- Framed mirror (36"x36")
- Solid surface countertop
with integral sink
- Metal vanity supports
with closure panel

BACK WALL ELEVATION



PLUMBING WALL ELEVATION

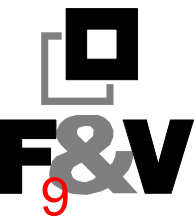


ISSUED FOR:

City of Saugatuck
Mount Baldhead Park
Restroom Building Replacement

Sketch - A3

PROJECT NO: 860460
ISSUE DATE: 12.20.2023



City of Saugatuck
Mt. Baldhead Upper Observation Deck Renovation
Engineer's Pre-Design Estimate of Probable Project Costs



Project No.: 860450
 By: JWM
 Date: 3/1/2024

Project Scope: Replace existing timber observation deck using galvanized steel support frame, composite decking and enhanced railings. Estimated costs for adjacent retaining walls and stair replacement are also presented for reference.

| ITEM NO. | ITEM DESCRIPTION | UNIT | ESTIMATED QUANTITY | ESTIMATED UNIT PRICE | ESTIMATED AMOUNT |
|----------|--|------|--------------------|----------------------|------------------|
| 1 | General Conditions, Bonds and Insurance, Max 5% | LSUM | 1 | \$ 53,000.00 | \$ 53,000 |
| 2 | Special Site Conditions, Access and Staging | LSUM | 1 | \$ 50,000.00 | \$ 50,000 |
| 3 | Removals | LSUM | 1 | \$ 32,000.00 | \$ 32,000 |
| 4 | Observation Deck (similar size as existing) | Sft | 900 | \$ 180.00 | \$ 162,000 |
| 5 | Observation Deck Railings (similar layout as existing) | Ft | 100 | \$ 200.00 | \$ 20,000 |
| 6 | Retaining Wall Replacement (if required/desired) | Sft | 2,000 | \$ 50.00 | \$ 100,000 |
| 7 | Stair Replacement (if required/desired) | Sft | 2,400 | \$ 220.00 | \$ 528,000 |
| 8 | Stair Railing Replacement (if required/desired) | Ft | 750 | \$ 220.00 | \$ 165,000 |

Subtotal Construction Cost: \$ 1,110,000
 Undeveloped Details & Contingency (20%): \$ 222,000
Engineering, Permitting & Construction Administration (15%): \$ 168,000
Total Estimated Project Cost (2024 dollars): \$ 1,500,000

Note - This is a unique project with limited comparable cost data. Estimated costs have been based on the following:

- a. The construction cost for the current stairs was approximately \$100,000 in 2009, using simple treated lumber and steel handrails.
- b. Costs are based on DNR's replacement of stairs at Hoffmaster State Park, which used similar materials for a smaller scale project (approx. 1,500sft of stairs and landings). That project cost was \$265,000 in 2016.

***The Design Professional has no control over costs or the price of labor, equipment or materials, or over the Contractor's method of pricing. Bid prices may vary significantly based on these factors and market conditions at time of bid.*